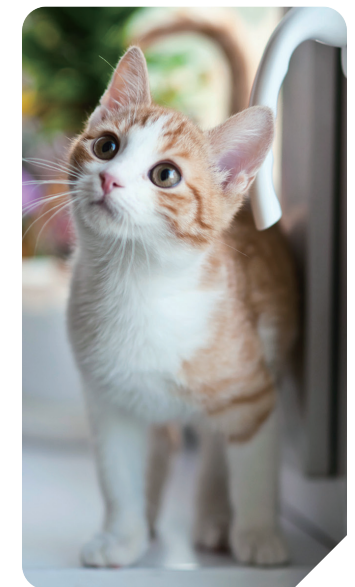


SonoScape

E1 ExpV

Color Doppler Veterinary Diagnostic
Ultrasound System



SonoScape

SonoScape Medical Corp.
2F, 12th Building, Shenzhen Software Park Phase II, Keji Middle
2nd Road, Shenzhen, China
Tel: +86-755-26722890 Fax: +86-755-26722850
Email: market@sonoscape.net www.sonoscape.com

U-E1V20220302

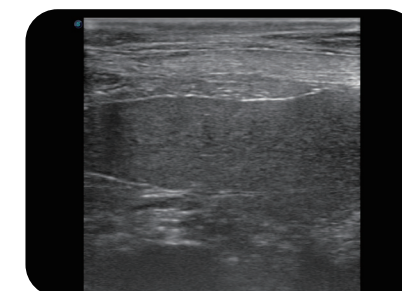
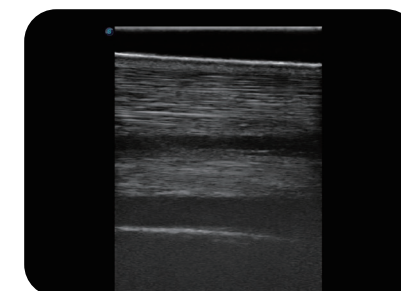
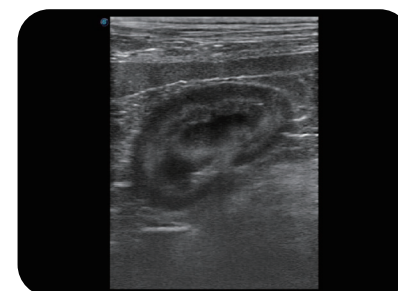
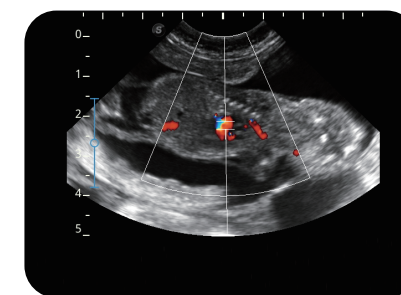




The E1ExpV has an integrated design from SonoScape's innovation technology. Combines unsurpassed image quality, ease-of-use and affordability packed with professional veterinary software and measurement packages, E1ExpV can provide care for all types of animals ranging from companion pet to large livestock animals to accomplish all of your needs. It improve the veterinarian's daily examination.

Full- Featured Technologies

- Spatial Compound Imaging
- SR-Flow Imaging
- Multi-beam Technology
- Auto Trace (Automatic calculation)
- Prospective and retrospective storage
- Widescan for both linear and convex probes
- M-Turning (Automated parameter adjustment)



User Friendly Designs

- 15.6-inch HD monitor
- Quick boot-up time
- Quiet system
- Inclined monitor and intuitive panel
- Water-proof protective film
- Versatile type of interface



Veterinary Preset System

Provide solution for veterinarian's daily scanning, cover a wide range of animals and clinical environments, E1ExpV support Versatile exam modes, with associated measurement, annotation and report system.



Feline



Canine



Equine



Hare



Murine



Ovine



Bovine